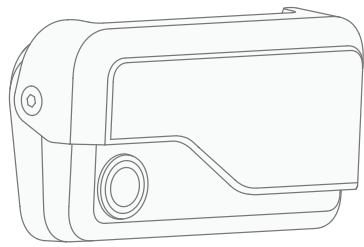


Dash Cam

INSTALL GUIDE

What you'll need:



1x Dash Cam



1x Vehicle Gateway



1x Cleaning Wipe

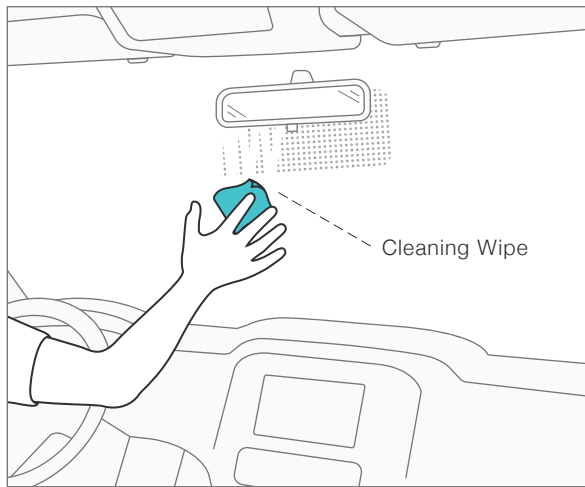


1x Allen Key



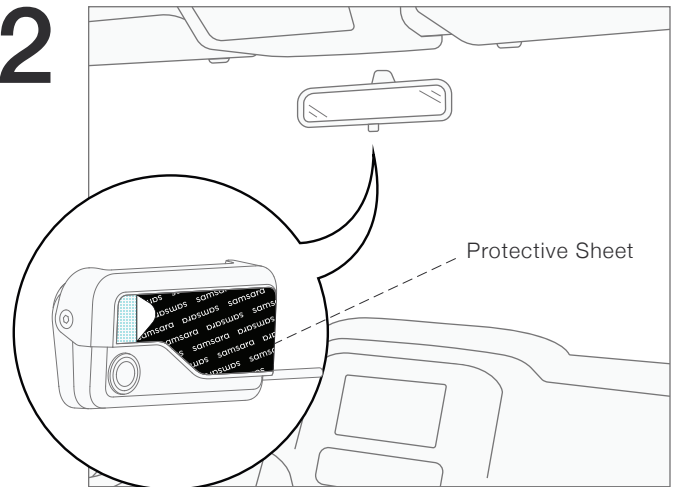
4x Cable Clips

1



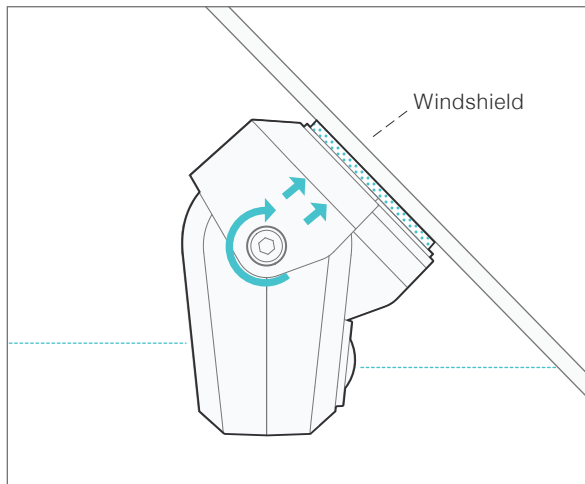
Identify mounting location and thoroughly clean with wipe. For optimal visibility, camera should be positioned below rear view mirror and above the windshield sweep.

2



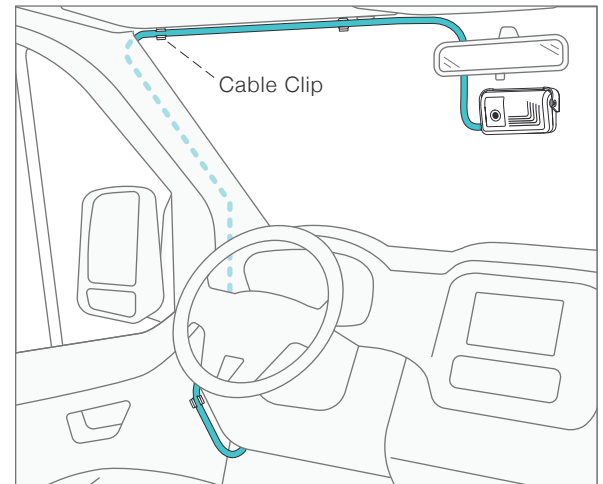
Peel off protective sheet and firmly press camera against windshield. Make sure there are no large bubbles between adhesive and glass.

3



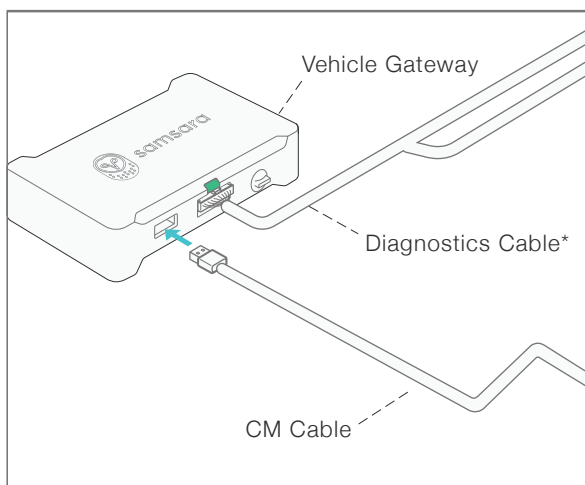
Adjust camera angle so that it hangs perfectly vertical, then tighten both screws using the allen key.

4



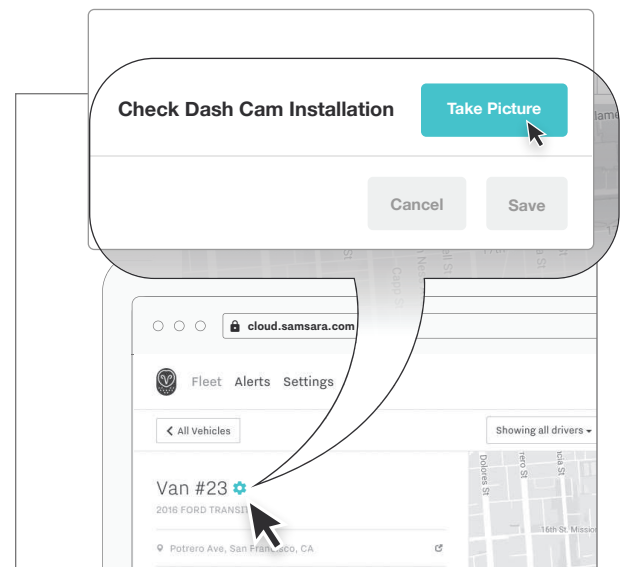
Run cable across top of windshield. Secure using cable clips or tuck cable under glass seal around windshield.

5



Plug camera in to the Vehicle Gateway's USB port. For best results, cable should not wrap around Gateway or cross diagnostics cable.

6



To confirm installation, go to the vehicle page in the dashboard, click the settings icon, and take a picture. You should clearly see all points of interest.